

Private School Authority Code: 9319
School Code: 3290

**AUDITED
FINANCIAL STATEMENTS
and Supporting Schedules for
FUNDED PRIVATE SCHOOLS
FOR THE YEAR ENDED AUGUST 31, 2019**

[Education Act, Section 29 (formerly School Act, Section 28)]

Private Schools Regulation, Alberta Regulation 93/2019 (formerly Alberta Regulation 190/2000)

Devon Christian School

Devon Christian School Society

Name of Private School and Legal Name of Organization Operating the Private School

205 Miquelon Avenue West, Devon AB, T0G 0L8

Mailing Address

Phone: 780-987-4157 Fax: 780-987-3323

Telephone and Fax Numbers

These Financial Statements and Supporting Schedules are Audited by:

Metrix Group LLP
12840 St Albert Trail NW
AB T5L 4H6
Edmonton,

Name and Address of the Audit Firm

Auditor's Signature

PRIVATE SCHOOL MANAGEMENT'S RESPONSIBILITY FOR FINANCIAL REPORTING.

The financial statements and supporting schedules of

Devon Christian School
Devon Christian School Society

(Name of Private School)

presented to Alberta Education have been prepared by the private school's management which has responsibility for their preparation, integrity and objectivity. The financial statements and schedules, including notes, have been prepared in accordance with Canadian Accounting Standards for Not-For-Profit organizations and Ministerial requirements for Alberta funded private schools.

In fulfilling its reporting responsibilities, management has maintained internal control systems and procedures designed to provide reasonable assurance that the private school's assets are safeguarded, that transactions are executed in accordance with appropriate authorization and that accounting records may be relied upon to properly reflect the private school's transactions. The effectiveness of the control systems is supported by the selection and training of qualified personnel, an organizational structure that provides an appropriate division of responsibility and a strong budgetary system of control.

The ultimate responsibility for the financial statements lies with the Board of Directors. The Board reviewed the financial statements with management in detail and the Board approved the financial statements for release.

External Independent Auditors

The Board appoints external independent auditors to audit these financial statements and meets with the auditor to review their findings. The external independent auditors have full and free access to school authority's records.

Declaration of Board Chair and Treasurer, Secretary-Treasurer

To the best of our knowledge and belief, these financial statements and supporting schedules reflect, in all material respects, the financial position as at August 31, 2019 and results of operations, cash flows, and changes in net assets for the year then ended in accordance with Canadian Accounting Standards for Not-For-Profit Organizations and Ministerial requirements for Alberta funded private schools.

BOARD CHAIR

Armyn Pederson

Name

Signature

SUPERINTENDENT / PRINCIPAL

Rhonda Bray

Name

Signature

SECRETARY TREASURER OR TREASURER

Jesse Kornelsen

Name

Signature

December 11, 2019

Board-approved Release Date

ALBERTA EDUCATION, Financial Reporting and Accountability,
8th Floor Commerce Place, 10155-102 Street, Edmonton, Alberta T5J 4L5
E-mail: Maria.Clawson@gov.ab.ca Telephone: (780) 427-7404



TABLE OF CONTENTS

	Page
INDEPENDENT AUDITOR'S REPORT (Attach please)	1
STATEMENT OF FINANCIAL POSITION	2
STATEMENT OF OPERATIONS	3
STATEMENT OF CASH FLOWS	4
STATEMENT OF CHANGES IN NET ASSETS	5
<u>SCHEDULES</u>	
SCHEDULE 1 Allocation of Revenues and Expenses to Programs	6
SCHEDULE 2 Analysis of Early Childhood Services Revenues and Expenses	7
SCHEDULE 3 Analysis of Early Childhood Services Transportation Revenues and Expenses	8
SCHEDULE 4 Analysis of Early Childhood Services Program Unit Expenses	
SCHEDULE 5 Remuneration & Monetary Incentives, and Contracted Services	9
SCHEDULE 6 Instructional and Non-Instructional Fees / Tuition	10
NOTES TO THE FINANCIAL STATEMENTS (Attach please)	11

STATEMENT OF FINANCIAL POSITION
 as at August 31
 (in dollars)

AFS 2019 AFS 2018 (NOTE 7)

	AFS 2019	AFS 2018 (NOTE 7)
ASSETS		
Current assets		
Cash and cash equivalents	\$6,376	\$36,419
Accounts receivable (net after allowances)		
Province of Alberta	\$0	\$0
Federal Government and/or First Nations	\$5,800	\$2,384
Other accounts receivable	\$17,226	\$8,117
Note 3	\$816	\$6,197
Prepaid expenses		
Note 2	\$522,918	\$543,364
Other current assets		
Note 2	\$553,238	\$596,451
Total current assets		
School generated assets	\$0	\$0
Trust assets	\$0	\$0
Other assets	\$0	\$0
Capital assets		
Land at cost	\$0	\$0
Buildings at cost	\$246,655	
Less: accumulated amortization	\$181,933	\$67,722
		\$73,500
Leasehold improvements at cost	\$0	
Less: accumulated amortization	\$0	\$0
Equipment at cost	\$103,214	
Less: accumulated amortization	\$37,705	\$71,508
		\$75,481
Vehicles at cost	\$75,510	
Less: accumulated amortization	\$28,352	\$47,118
		\$54,669
Note 4		\$186,348
Note 4		\$203,470
Total capital assets		
TOTAL ASSETS	\$739,586	\$739,586
TOTAL ASSETS		\$739,586
TOTAL ASSETS		\$739,586
LIABILITIES		
Current liabilities		
Bank indebtedness	\$0	\$0
Accounts payable and accrued liabilities		
Province of Alberta	\$0	\$0
Federal Government and/or First Nations	\$0	\$2,626
Other payables and accrued liabilities	\$11,413	\$10,458
Note 5		
Capital payables	\$0	\$0
Deferred contributions	\$12,775	\$11,225
Deferred capital allocations	\$0	\$0
Current portion of long term debt	\$0	\$0
Total current liabilities	\$24,188	\$24,309
School generated liabilities	\$0	\$0
Trust liabilities	\$0	\$0
Other liabilities	\$0	\$0
Long term debt		
Debentures & Bonds	\$0	\$0
Capital loans	\$0	\$0
Capital leases	\$0	\$0
Mortgages	\$0	\$0
Other loans	\$0	\$0
Less: Current portion of long term debt	\$0	\$0
Note 6		
Unamortized capital allocations	\$94,722	\$100,855
Note 6		
Total long term liabilities	\$94,722	\$100,855
TOTAL LIABILITIES	\$118,910	\$125,164
TOTAL LIABILITIES		\$125,164
TOTAL LIABILITIES		\$125,164
NET ASSETS		
Unrestricted net assets	\$6,132	\$28,776
Operating reserves	\$0	\$0
Total accumulated surplus (deficit) from operations	\$6,132	\$28,776
Investment in capital assets	\$81,526	\$102,615
Capital reserves	\$522,918	\$543,364
Total capital funds	\$604,544	\$645,979
Total net assets	\$610,676	\$674,755
TOTAL LIABILITIES AND NET ASSETS	\$739,586	\$739,586

Note: Audited Financial Statements (AFS) as submitted to Alberta Education pursuant to section 29 of the Education Act (formerly School Act);
 Private Schools Regulation, Alberta Regulation 19/2019 (formerly Alberta Regulation 19/2009) or as revised.
 Input "Released" in 2018 column heading where not taken from the finalized 2017/2018 Audited Financial Statements.

Private School Authority Code: 9319
 School Code: 3290

STATEMENT OF OPERATIONS
 for the Year Ended August 31
 (in dollars)

	AFS 2019	Budget 2019 (NOTE *)	AFS 2018 (NOTE *)
REVENUES			
Alberta Education (excluding Home Education)	\$504,919	\$500,191	\$468,677
Alberta Education - Home Education	\$0	\$0	\$0
Total Alberta Education Revenues	\$504,919	\$500,191	\$468,677
Other Government of Alberta	\$0	\$0	\$0
Federal Government and/or First Nations	\$0	\$0	\$0
Other Alberta school authorities	\$0	\$0	\$0
Instructional fees/Tuition fees	\$33,405	\$13,900	\$33,639
Non-instructional fees (O&M, Transportation, Admin, etc.)	\$25,705	\$34,225	\$22,660
Other sales and services	\$0	\$73,350	\$0
Interest on investments	\$14,845	\$30,000	\$20,355
Gifts and donations	\$93,072	\$54,000	\$115,768
Gross school generated funds	\$16,472	\$14,550	\$16,147
Amortization of capital allocations	\$6,133	\$2,120	\$6,113
Other	\$0	\$0	\$0
Total Revenues	\$694,550	\$722,336	\$683,359
EXPENSES			
Certificated salaries (excluding home education)	\$294,056	\$351,689	\$313,866
Certificated benefits	\$52,417	\$41,014	\$45,131
Non-certificated salaries and wages (excluding home education)	\$102,297	\$62,107	\$100,629
Non-certificated benefits	\$13,705	\$9,605	\$10,485
Services, contracts and supplies other than Consulting fees/Management fees, and leases (excluding home ed.)	\$165,350	\$172,396	\$153,543
Consulting / Management Fees	\$0	\$0	\$0
Leases - Building	\$18,000	\$0	\$18,000
Leases - Other	\$0	\$0	\$0
Severe Disabilities (excluding home education)	\$65,860	\$56,020	\$49,395
Early Literacy (excluding home education)	\$3,352	\$3,100	\$4,150
English as a Second Language (excluding home education)	\$0	\$900	\$0
Regional Collaborative Service Delivery (excluding home ed.)	\$0	\$0	\$0
Home Education:			
Certificated salaries	\$0	\$0	\$0
Certificated benefits	\$0	\$0	\$0
Non-certificated salaries & wages	\$0	\$0	\$0
Non-certificated benefits	\$0	\$0	\$0
Payments to parents who provided home education programs to students	\$0	\$0	\$0
Contracts	\$0	\$0	\$0
Services and supplies	\$0	\$0	\$0
Regional Collaborative Service Delivery	\$0	\$0	\$0
Gross school generated funds	\$16,472	\$14,550	\$16,147
Capital and debt services			
Amortization of capital assets:			
From restricted funds	\$6,133	\$2,120	\$6,113
From unrestricted funds	\$10,989	\$8,794	\$11,009
Total amortization of capital assets	\$17,122	\$10,914	\$17,122
Interest on capital debt	\$0	\$0	\$0
Other interest charges	\$0	\$0	\$0
Losses (gain) on disposal of capital assets	\$0	\$0	\$0
Other	\$0	\$0	\$0
Total Expenses	\$748,631	\$722,295	\$728,448
SURPLUS (DEFICIT) OF REVENUES OVER EXPENSES	(\$54,081)	\$41	(\$45,089)
	(\$54,081)		

Note: * Input *(Restated) in Budget 2019 and/or AFS 2018 column headings where comparatives are not taken from the respective finalized 2018/2019 Budget Report and/or finalized 2017/2018 Audited Financial Statements.

STATEMENT OF CASH FLOWS
 for the Year Ended August 31
 (in dollars)

AFS 2019 AFS 2018 (NOTE *)

CASH FLOWS FROM:		
A. OPERATING ACTIVITIES		
Surplus (deficit) of revenues over expenses for the year	(\$54,081)	(\$45,089)
Add (Deduct) items not requiring cash:		
Amortization of capital allocations revenue	(\$6,133)	(\$6,113)
Total amortization expense	\$17,122	\$17,122
Add losses or deduct gains on disposal of capital assets	\$0	\$0
Changes in accrued accounts:		
Accounts receivable	(\$12,625)	(\$30)
Prepays and other current assets	\$25,797	(\$14,578)
Payables and accrued liabilities	(\$1,571)	(\$14,776)
Deferred contributions	\$1,450	(\$1,350)
Other (specify):		\$0
..... Total sources (uses) of cash from operations	(\$30,041)	(\$64,814)
B. INVESTING ACTIVITIES		
Purchases of capital assets:		
Land	\$0 [3]	\$0 [4]
Buildings	\$0 [5]	\$0 [6]
Leasehold improvements	\$0 [7]	\$0 [8]
Equipment	\$0 [9]	\$0 [10]
Vehicles	\$0 [11]	\$0 [12]
Net proceeds from disposal of capital assets	\$0	\$0
Other (specify):	\$0	\$0
..... Total sources (uses) of cash from investing activities	\$0	\$0
C. FINANCING ACTIVITIES		
Capital contributions received	\$0	\$0
..... Issuance of long term debt	\$0	\$0
..... Repayment of long term debt	\$0	\$0 [13]
Other (specify):	\$0	\$0
..... Total sources (uses) from financing activities	\$0	\$0
Net sources (uses) of cash equivalents* during year	(\$30,041)	(\$64,814)
Cash equivalents at the beginning of year	\$36,419	\$101,233
Cash equivalents at the end of year	\$6,378	\$36,419

NOTE: * Input "(Restated)" in 2018 column heading where not taken from the finalized 2017/2018 Audited Financial Statements.
 * * Cash equivalents consist of cash and temporary investments net of bank indebtedness.

11

11

11

STATEMENT OF CHANGES IN NET ASSETS

	For the Year Ended August 31, 2019				RESTRICTED NET ASSETS			
	TOTAL NET ASSETS (Columns 2+3+4)	INVESTMENT (BY CLASS) CAPITAL ASSETS (1-1)	NET ASSETS (1-1)	RESTRICTED NET ASSETS (Column 5 to 8)	OPERATING RESERVES		CAPITAL RESERVES	
					Open K to 12	Engage Services	Open K to 12	Engage Services
Balance at August 31, 2018	\$274,712	\$102,616	\$28,776	\$243,364	\$0	\$0	\$243,364	\$0
Four period adjustments (specify):								
	\$0	\$0	\$0	\$0	\$0	\$0	\$0	\$0
	\$0	\$0	\$0	\$0	\$0	\$0	\$0	\$0
	\$0	\$0	\$0	\$0	\$0	\$0	\$0	\$0
	\$0	\$0	\$0	\$0	\$0	\$0	\$0	\$0
Adjusted balance, August 31, 2019	\$274,712	\$102,616	\$28,776	\$243,364	\$0	\$0	\$243,364	\$0
Surplus/(deficit) of revenue over expenses (from page 2)								
	(\$64,081)		(\$64,081)					
Capital asset acquisitions (less financed and/or less capital contributions received)		\$0	\$0	\$0	\$0	\$0	\$0	\$0
Disposal of non-amortizable assets	\$0	\$0	\$0	\$0				
Amortization of capital assets (expense) **			\$17,122					
Amortization of capital allocations (revenue) **			(\$6,133)					
Disposal of capital assets		\$0	\$0	\$0			\$0	\$0
Debt principal payments **		\$0	(\$2,114)					
Net transfers to/from operating reserves	\$0	\$0	\$0	\$0	\$0	\$0		
Net transfers to/from capital reserves	\$0	\$0	(\$20,446)	(\$20,446)				(\$20,446)
Other transfers (specify):	\$0	\$0	\$0					
Balance at August 31, 2019	\$210,631	\$91,630	\$6,132	\$222,910	\$0	\$0	\$222,910	\$0

Note:
 * Amortization of Capital Assets expense decreases the Investment in Capital Assets and increases Unrestricted Net Assets.
 ** Amortization of Capital Allocations revenue increases the Investment in Capital Assets and decreases Unrestricted Net Assets.
 *** Principal payments increase Investment in Capital Assets and decrease Unrestricted Net Assets as the outstanding capital debt is paid down.

SCHEDULE 1
 ALLOCATION OF REVENUES AND EXPENSES TO PROGRAMS
 for the Year Ended August 31, 2019

REVENUES	TOTAL	Home Education	Early Childhood Services	Instruction (Grades 1 to 12)	Operational and Maintenance of Schools (Grades 1 to 12)	Transportation (Grades 1 to 12)	Board and System Administration (Grades 1 to 12)	External Services
Alberta Education allocations								
(1) Instruction	\$342,120	\$0	\$50,160	\$331,960				
(2) Severe Disabilities	\$65,860			\$65,860				
(3) Early Intervention (EI)	\$3,352			\$3,352				
(4) English as a Second Language (ESL)	\$2,474			\$2,474				
(5) Regional Collaborative Service Delivery (RCSD)	\$0			\$0				
(6) Other - Alberta Education	\$51,080	\$0	\$0	\$11,380	\$39,640			
TOTAL ALBERTA EDUCATION ALLOCATIONS	\$504,918	\$0	\$50,160	\$442,572	\$39,640			
(7) Other Government of Alberta	\$0	\$0	\$0	\$0	\$0	\$0	\$0	\$0
(8) Federal Government and/or First Nations	\$0	\$0	\$0	\$0	\$0	\$0	\$0	\$0
(9) Other Alberta school authorities	\$0	\$0	\$0	\$0	\$0	\$0	\$0	\$0
(10) Instructional fees/tuition fees	\$33,405	\$0	\$1,713	\$12,300				\$19,392
(11) Non-instructional fees (O&M*, Transport, Admin, etc.)	\$44,900	\$0	\$0	\$0	\$0	\$44,900	\$0	\$0
(12) Other salaries and services	\$14,845	\$0	\$0	\$0	\$0	\$0	\$14,845	\$0
(13) Interest on investments	\$92,070	\$0	\$0	\$0	\$0	\$0	\$92,070	\$0
(14) Gifts and donations	\$0	\$0	\$0	\$0	\$0	\$0	\$0	\$0
(15) Gross school generated funds	\$12,118	\$0	\$0	\$0	\$6,153	\$0	\$0	\$0
(16) Amortization of capital allocations	\$0	\$0	\$0	\$0	\$0	\$0	\$0	\$0
(17) Other (specify):	\$0	\$0	\$0	\$0	\$0	\$0	\$0	\$0
TOTAL REVENUES	\$894,550	\$0	\$53,163	\$442,572	\$45,813	\$25,700	\$107,917	\$19,392
EXPENSES								
(18) Certificated salaries	\$294,056	\$0	\$60,000	\$207,740			\$13,360	\$13,956
(19) Certificated benefits	\$25,415	\$0	\$10,108	\$15,307			\$1,001	\$906
(20) Non-certificated salaries and wages	\$102,297	\$0	\$170	\$25,218	\$0	\$33,944	\$15,000	\$0
(21) Non-certificated benefits	\$18,705	\$0	\$0	\$9,768	\$0	\$2,118	\$1,825	\$0
SUB-TOTAL	\$448,473	\$0	\$70,288	\$157,773	\$0	\$38,022	\$31,196	\$15,712
(22) Services, contracts & supplies - other than Consulting fees / Management fees, and leases	\$165,350	\$0	\$1,508	\$87,905	\$35,291	\$10,068	\$69,710	\$0
Consulting / Management Fees	\$0	\$0	\$0	\$0	\$0	\$0	\$0	\$0
Leases - Building	\$18,000	\$0	\$0	\$0	\$18,000	\$0	\$0	\$0
Leases - Other	\$0	\$0	\$0	\$0	\$0	\$0	\$0	\$0
(23) Severe Disabilities	\$65,860			\$65,860				
(24) Early Intervention (EI)	\$3,352			\$3,352				
(25) English as a Second Language (ESL)	\$0			\$0				
(26) Regional Collaborative Service Delivery (RCSD)	\$0			\$0				
(27) Gross school generated funds	\$14,472	\$0	\$1,242	\$15,180	\$0	\$0	\$0	\$0
Capital and debt services								
(28) From restricted funds	\$78,348	\$0	\$0	\$0	\$78,348	\$0	\$0	\$0
(29) From unrestricted funds	\$0	\$0	\$0	\$0	\$0	\$0	\$0	\$0
(30) Interest on capital debt	\$0	\$0	\$0	\$0	\$0	\$0	\$0	\$0
(31) Other interest charges	\$0	\$0	\$0	\$0	\$0	\$0	\$0	\$0
(32) Losses (gains) on disposal of capital assets	\$0	\$0	\$0	\$0	\$0	\$0	\$0	\$0
(33) Other (specify):	\$0	\$0	\$0	\$0	\$0	\$0	\$0	\$0
TOTAL EXPENSES	\$798,631	\$748,631	\$0	\$73,072	\$453,082	\$54,413	\$45,954	\$19,712
Surplus(deficit) of revenues over expenses	\$95,919	\$145,919	\$0	\$369,500	\$39,400	\$25,700	\$82,003	\$0

* (O&M) Operations & Maintenance of Schools.

**SCHEDULE 2
ANALYSIS OF EARLY CHILDHOOD SERVICES REVENUES AND EXPENSES
for the Year Ended August 31, 2019**

		AFS 2019	AFS 2018**
REVENUES			
Alberta Education *			
Basic Instruction		\$40,079	\$20,039
Regional Collaborative Service Delivery (RCSD)		\$0	\$0
Mild/Moderate Disabilities/Delays, Gifted & Talented		\$0	\$0
Program Unit (PU)		\$0	\$0
English as a Second Language (ESL)		\$0	\$0
Transportation - special needs		\$0	\$0
Transportation - regular		\$2,745	\$1,098
Plant Operations and Maintenance		\$4,772	\$2,386
Administration		\$2,570	\$1,270
Equity of Opportunity		\$0	\$0
SuperNet Services		\$0	\$0
Other Alberta Education		\$0	\$0
Total Alberta Education Revenues	\$50,166	\$50,166	\$24,793
Instruction fees		\$1,713	\$690
All other revenues		\$1,283	\$749
TOTAL REVENUES***	\$53,162	\$53,162	\$26,232
EXPENSES			
Instruction		\$70,281	\$70,607
Parent resources, coordination and teacher in-service		\$0	\$0
Food services program		\$0	\$0
Administration		\$1,508	\$810
Operations & maintenance		\$0	\$0
Transportation		\$0	\$0
English as a Second Language (ESL)		\$0	\$0
Regional Collaborative Service Delivery (RCSD)		\$0	\$0
All other expenses		\$1,283	\$749
TOTAL EXPENSES***	\$73,072	\$73,072	\$72,166
SURPLUS (DEFICIT) OF REVENUES OVER EXPENSES	(\$19,910)	(\$19,910)	(\$45,934)

* Alberta Education Revenues as per Funding for School Authorities in the 2018/2019 School Year Manual under the Early Childhood Services section.

** Input "(Restated)" in AFS 2018 column heading where not taken from the finalized 2017/2018 Audited Financial Statements and Supporting Schedules.

*** The total revenues and expenses on this schedule must agree with the Schedule 1 total revenues and expenses allocated under the ECS program.

.....

.....

Private School Authority Code: 9319
 School Code: 3290

**SCHEDULE 3
 ANALYSIS OF EARLY CHILDHOOD SERVICES TRANSPORTATION REVENUES AND EXPENSES
 for the Year Ended August 31, 2019**

Sub-Program Classification	Revenues	Expenses	Net
Children with Mild/Moderate Disabilities/Delays			
To-and-from school	\$0	\$0	\$0
Home visits	\$0	\$0	\$0
Field trips	\$0	\$0	\$0
Children with Severe Disabilities (Program Unit)			
To-and-from school	\$0	\$0	\$0
Home visits	\$0	\$0	\$0
Field trips and in-program transportation	\$0	\$0	\$0
Children with No Disabilities (Regular)			
To-and-from school	\$2,745	\$0	\$2,745
Field trips	\$0	\$0	\$0
Other (specify):	\$0	\$0	\$0
TOTAL	\$2,745	\$0	\$2,745

**SCHEDULE 4 (Note *)
 ANALYSIS OF EARLY CHILDHOOD SERVICES PROGRAM UNIT EXPENSES
 for the Year Ended August 31, 2019**

	AFS 2019	AFS 2018 * * *
Instruction		
Salaries & wages (non-certificated)	\$0	\$0
Benefits (non-certificated)	\$0	\$0
Specialized services and supports	\$0	\$0
Supplies and materials	\$0	\$0
Parent and staff in-service		
	\$0	\$0
Transportation		
Total Program Unit transportation costs (from schedule 3)	\$0	
Less transportation revenues (from schedule 3)	\$0	
Total	\$0	
Program Unit Transportation costs in excess of transportation funding * *	\$0	\$0
Specialized equipment & furniture (child specific)		
	\$0	\$0
Total	\$0	\$0

Note: * Designated Special Education ECS Programs do not need to complete this schedule. Costs for these programs will be determined using Schedule 2.
 * * If transportation revenues exceed transportation costs (i.e. negative number as total), then 0 will be entered.
 * * * Input "(Restated)" in AFS 2018 column heading where not taken from the finalized 2017/2018 Audited Financial Statements and Supporting Schedules.

**Schedule 5
Remuneration & Monetary Incentives, and Contracted Services For Senior Management and Directors Position
for the Year Ended August 31, 2019**

Position	Name	Full Time Equivalent FTE 2019	Remuneration 2019	Benefits 2019	Other Compensation 2019	Other Expenses 2019	Full Time Equivalent FTE 2018	Remuneration 2018	Benefits 2018	Other Compensation 2018	Other Expenses 2018
Board Chair:	Arwyn Pederson	1.00	\$0	\$0	\$0	\$0	1.00	\$0	\$0	\$0	\$0
Secretary-Treasurer:		0.00	\$0	\$0	\$0	\$0	0.00	\$0	\$0	\$0	\$0
Secretary:	Stephanie Vander Veen	1.00	\$0	\$0	\$0	\$0	1.00	\$0	\$0	\$0	\$0
Treasurer:	Jesse Kornelsen	1.00	\$0	\$0	\$0	\$0	1.00	\$0	\$0	\$0	\$0
Board of Directors:	1 Valerina Martens	1.00	\$0	\$0	\$0	\$0	1.00	\$0	\$0	\$0	\$0
	2 Emily Smith	1.00	\$0	\$0	\$0	\$0	1.00	\$0	\$0	\$0	\$0
	3 Regina Hansen	1.00	\$0	\$0	\$0	\$0	1.00	\$0	\$0	\$0	\$0
	4	0.00	\$0	\$0	\$0	\$0	0.00	\$0	\$0	\$0	\$0
	5	0.00	\$0	\$0	\$0	\$0	0.00	\$0	\$0	\$0	\$0
	6	0.00	\$0	\$0	\$0	\$0	0.00	\$0	\$0	\$0	\$0
	7	0.00	\$0	\$0	\$0	\$0	0.00	\$0	\$0	\$0	\$0
	8	0.00	\$0	\$0	\$0	\$0	0.00	\$0	\$0	\$0	\$0
	9	0.00	\$0	\$0	\$0	\$0	0.00	\$0	\$0	\$0	\$0
	10	0.00	\$0	\$0	\$0	\$0	0.00	\$0	\$0	\$0	\$0
	11	0.00	\$0	\$0	\$0	\$0	0.00	\$0	\$0	\$0	\$0
	12	0.00	\$0	\$0	\$0	\$0	0.00	\$0	\$0	\$0	\$0
	13	0.00	\$0	\$0	\$0	\$0	0.00	\$0	\$0	\$0	\$0
Board of Directors - Total		3.00	\$0	\$0	\$0	\$0	3.00	\$0	\$0	\$0	\$0
Superintendent:		0.00	\$0	\$0	\$0	\$0	0.00	\$0	\$0	\$0	\$0
Principals:	1 Rhonda Bray	1.00	\$83,972	\$13,159	\$0	\$0	1.00	\$85,383	\$10,946	\$0	\$0
	2	0.00	\$0	\$0	\$0	\$0	0.00	\$0	\$0	\$0	\$0
	3	0.00	\$0	\$0	\$0	\$0	0.00	\$0	\$0	\$0	\$0
	4	0.00	\$0	\$0	\$0	\$0	0.00	\$0	\$0	\$0	\$0
	5	0.00	\$0	\$0	\$0	\$0	0.00	\$0	\$0	\$0	\$0
	6	0.00	\$0	\$0	\$0	\$0	0.00	\$0	\$0	\$0	\$0
	7	0.00	\$0	\$0	\$0	\$0	0.00	\$0	\$0	\$0	\$0
	8	0.00	\$0	\$0	\$0	\$0	0.00	\$0	\$0	\$0	\$0
	9	0.00	\$0	\$0	\$0	\$0	0.00	\$0	\$0	\$0	\$0
Principals - Total		1.00	\$83,972	\$13,159	\$0	\$0	1.00	\$85,383	\$10,946	\$0	\$0
Chief Financial Officer:		0.00	\$0	\$0	\$0	\$0	0.00	\$0	\$0	\$0	\$0
Management/Executives:	1	0.00	\$0	\$0	\$0	\$0	0.00	\$0	\$0	\$0	\$0
	2	0.00	\$0	\$0	\$0	\$0	0.00	\$0	\$0	\$0	\$0
	3	0.00	\$0	\$0	\$0	\$0	0.00	\$0	\$0	\$0	\$0
	4	0.00	\$0	\$0	\$0	\$0	0.00	\$0	\$0	\$0	\$0
	5	0.00	\$0	\$0	\$0	\$0	0.00	\$0	\$0	\$0	\$0
	6	0.00	\$0	\$0	\$0	\$0	0.00	\$0	\$0	\$0	\$0
Management/Executives - Total		0.00	\$0	\$0	\$0	\$0	0.00	\$0	\$0	\$0	\$0
Total Certificated staff (excluding Home Education)		0.00	\$294,056	\$52,417	\$0	\$0	6.00	\$367,411	\$45,130	\$0	\$0
Total Non-Certificated staff (excluding Home Education)		0.00	\$102,387	\$13,615	\$0	\$0	2.00	\$100,629	\$10,465	\$0	\$0
Total Certificated contract staff (excluding Home Education)		0.00	\$0	\$0	\$0	\$0	0.00	\$0	\$0	\$0	\$0
Total Non-Certificated contract staff (excluding Home Education)		0.00	\$0	\$0	\$0	\$0	0.00	\$0	\$0	\$0	\$0
Total Certificated staff (Home Education)		0.00	\$0	\$0	\$0	\$0	0.00	\$0	\$0	\$0	\$0
Total Non-Certificated staff (Home Education)		0.00	\$0	\$0	\$0	\$0	0.00	\$0	\$0	\$0	\$0
Total Certificated Contract staff (Home Education)		0.00	\$0	\$0	\$0	\$0	0.00	\$0	\$0	\$0	\$0
Total Non-Certificated Contract staff (Home Education)		0.00	\$0	\$0	\$0	\$0	0.00	\$0	\$0	\$0	\$0

Contracted Services for Senior Management and Director's Position Only:

Position	Name	FTE 2019	Contract Amount 2019	Allowances 2019	Bonuses 2019	Other Expenses 2019	FTE 2018	Contract Amount 2018	Allowances 2018	Bonuses 2018	Other Expenses 2018
Consulting / Management fees:	1	0.00	\$0	\$0	\$0	\$0	0.00	\$0	\$0	\$0	\$0
	2	0.00	\$0	\$0	\$0	\$0	0.00	\$0	\$0	\$0	\$0
	3	0.00	\$0	\$0	\$0	\$0	0.00	\$0	\$0	\$0	\$0
	4	0.00	\$0	\$0	\$0	\$0	0.00	\$0	\$0	\$0	\$0
Consulting / Management fees - Total		0.00	\$0	\$0	\$0	\$0	0.00	\$0	\$0	\$0	\$0

Private School Authority Code: 9319
 School Code: 3390

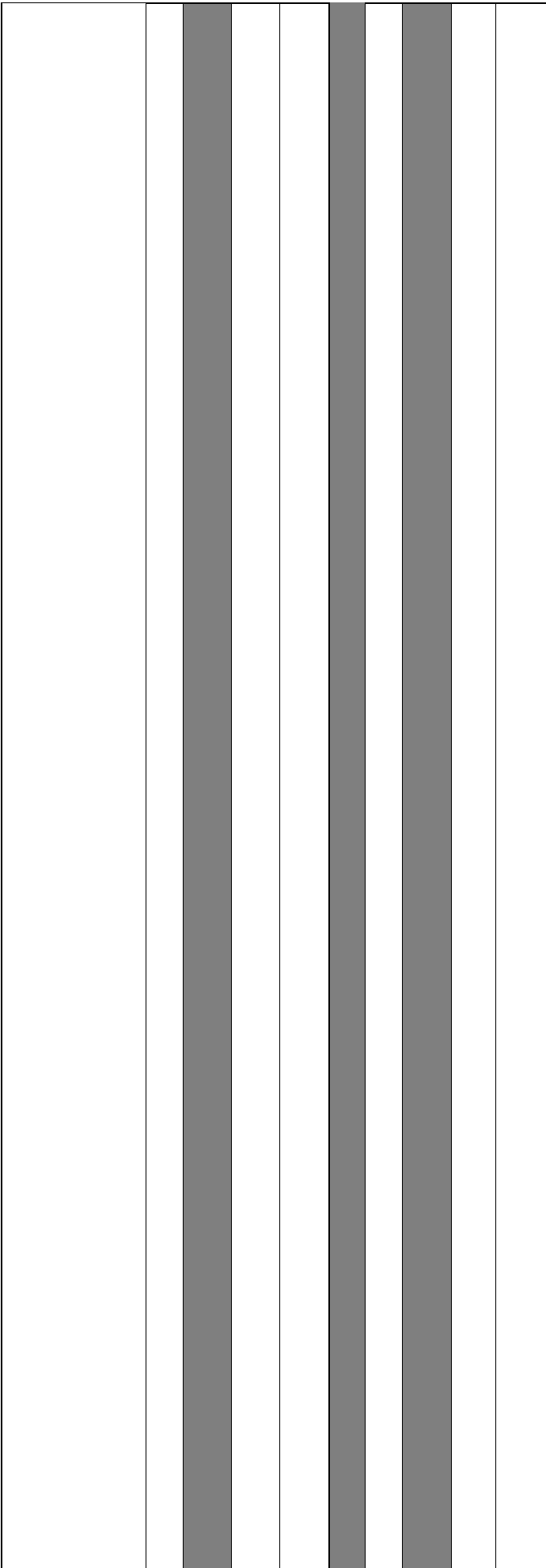
SCHEDULE 6
 INSTRUCTIONAL AND NON-INSTRUCTIONAL TUITION / FEES

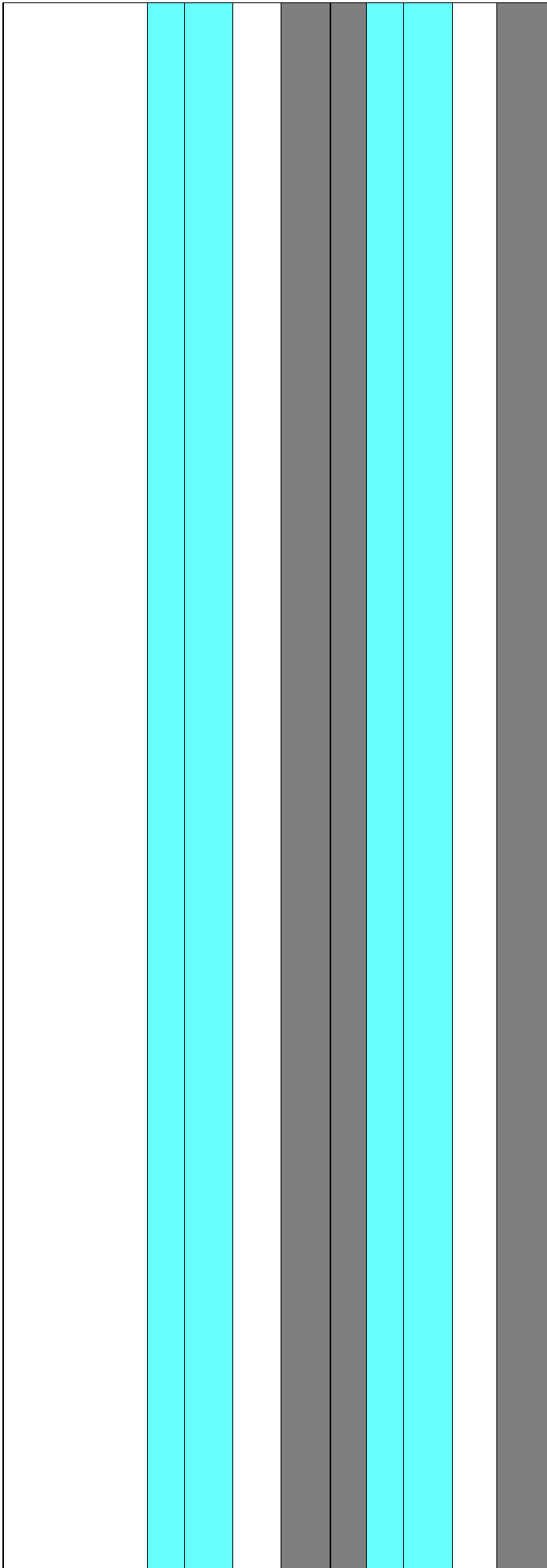
	Instruction Hours 2018/2019	Class Count 2018/2019	per child/student 2018/2019	Tuition/Fees 2018/2019	Tuition/Fees 2018/2019	Instruction Hours 2017/2018	Class Count 2017/2018	per child/student 2017/2018	Tuition/Fees 2017/2018	Tuition/Fees 2017/2018
Instructional										
Instruction ECS	2852	12	1	\$100	\$1,800	(662)	(7)		\$75	\$525
Instruction ECS (additional student per family)	0	0		\$0	\$0	(0)	(0)		\$0	\$0
Instruction grades 1 to 6		58		\$150	\$8,700	(59)			\$150	\$8,850
Instruction grades 1 to 6 (additional student per family)		0		\$0	\$0	(0)			\$0	\$0
Instruction grades 7 to 9		0		\$0	\$0	(0)			\$0	\$0
Instruction grades 7 to 9 (additional student per family)		13		\$300	\$3,900	(13)			\$150	\$1,950
Instruction grades 10 to 12		0		\$0	\$0	(0)			\$0	\$0
Instruction grades 10 to 12 (additional student per family)		0		\$0	\$0	(0)			\$0	\$0
Other Instruction Fees / Tuition (ECS and grades 1 to 12) (describe)					-\$87				\$165	-\$25

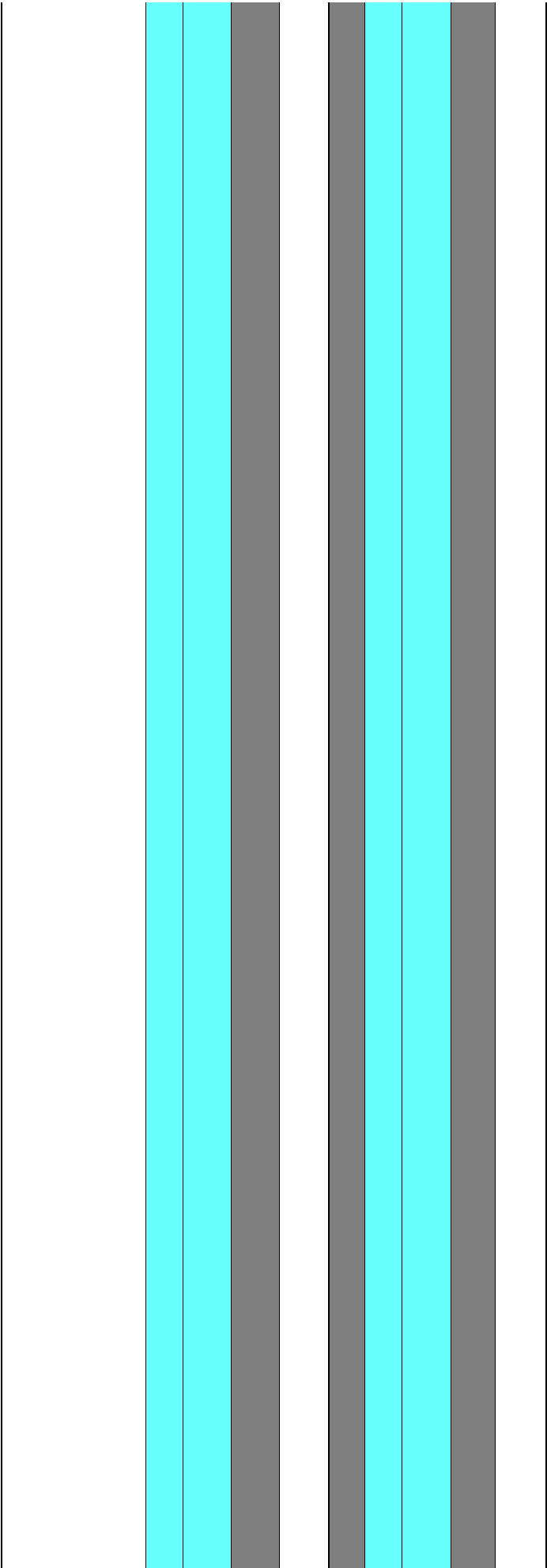
Instructional - Maximum amount

\$300

\$150

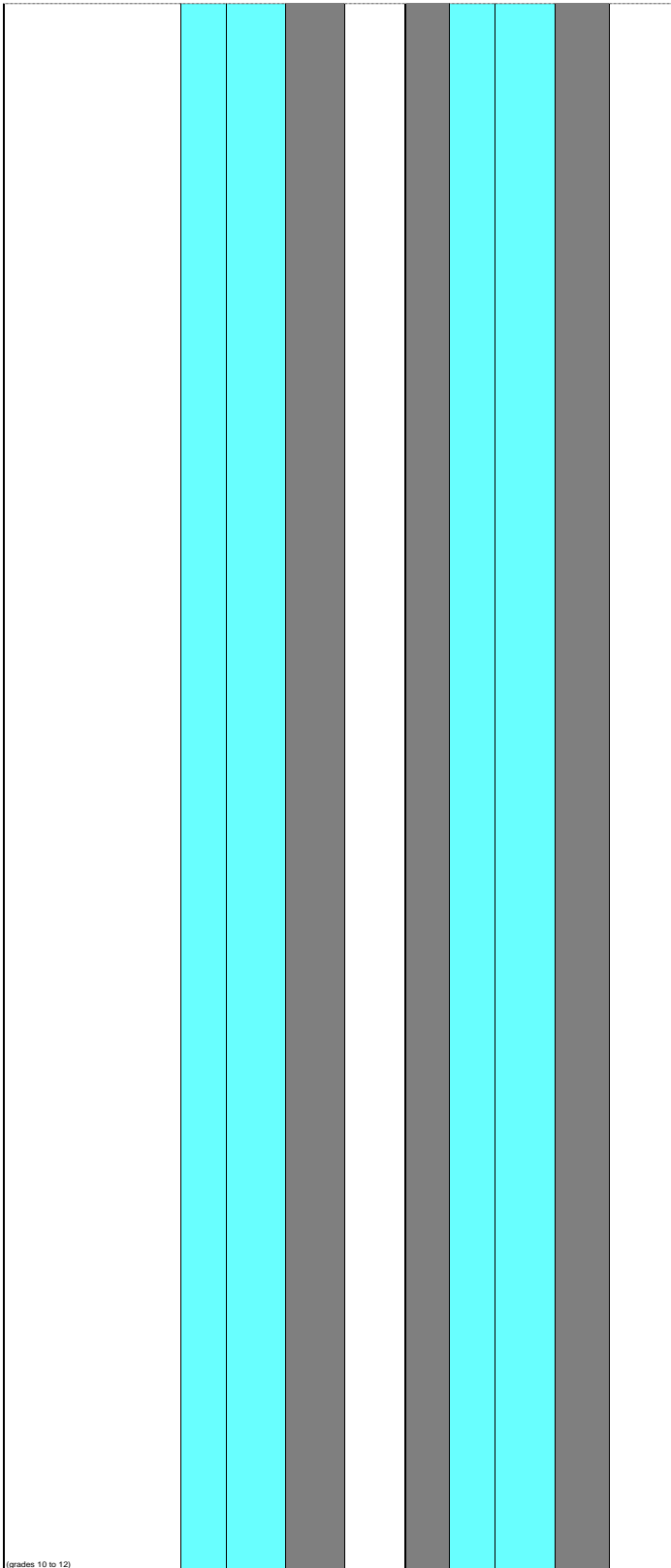




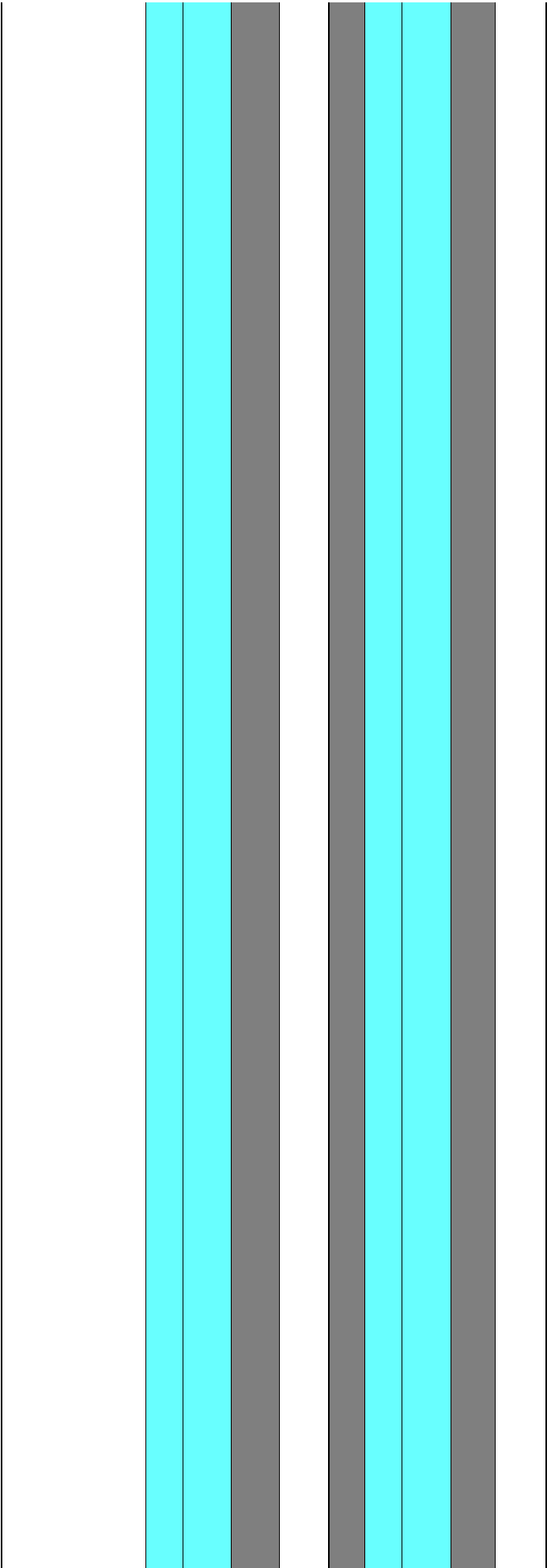


Operations and Maintenance of Schools	0	\$0		\$0	(0)	\$0		\$0
---------------------------------------	---	-----	--	-----	-----	-----	--	-----

(grades 7 to 9)	0	50		50		100	50		50
-----------------	---	----	--	----	--	-----	----	--	----

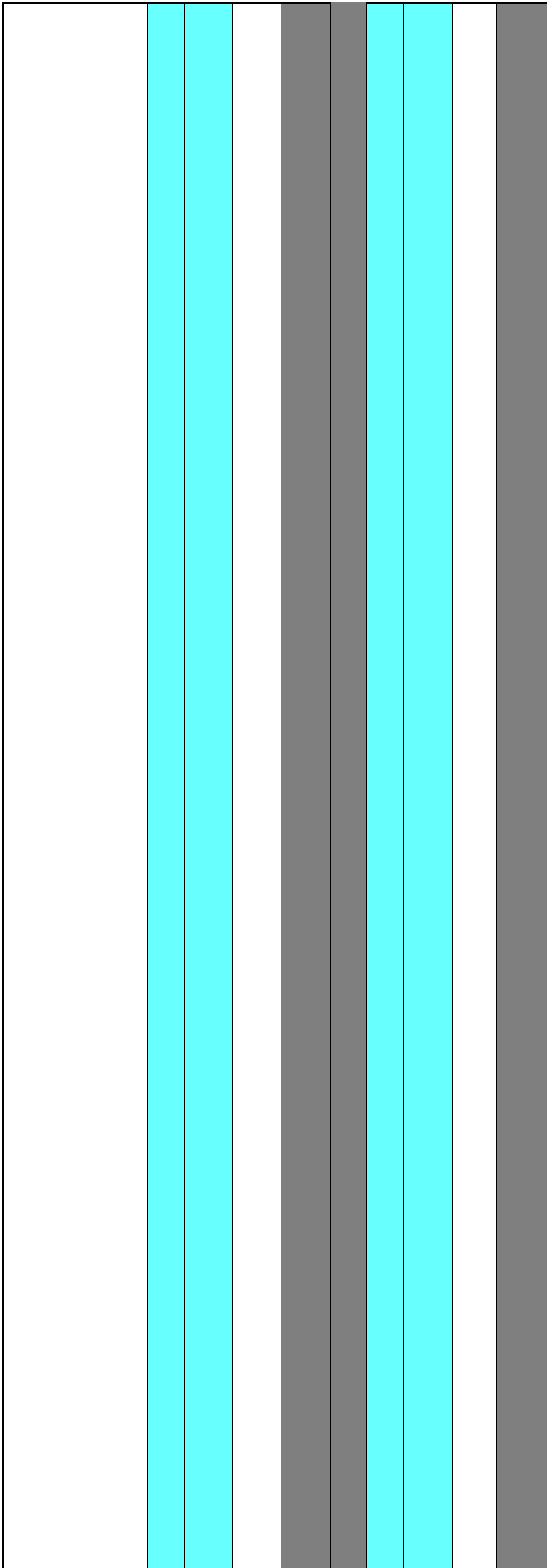


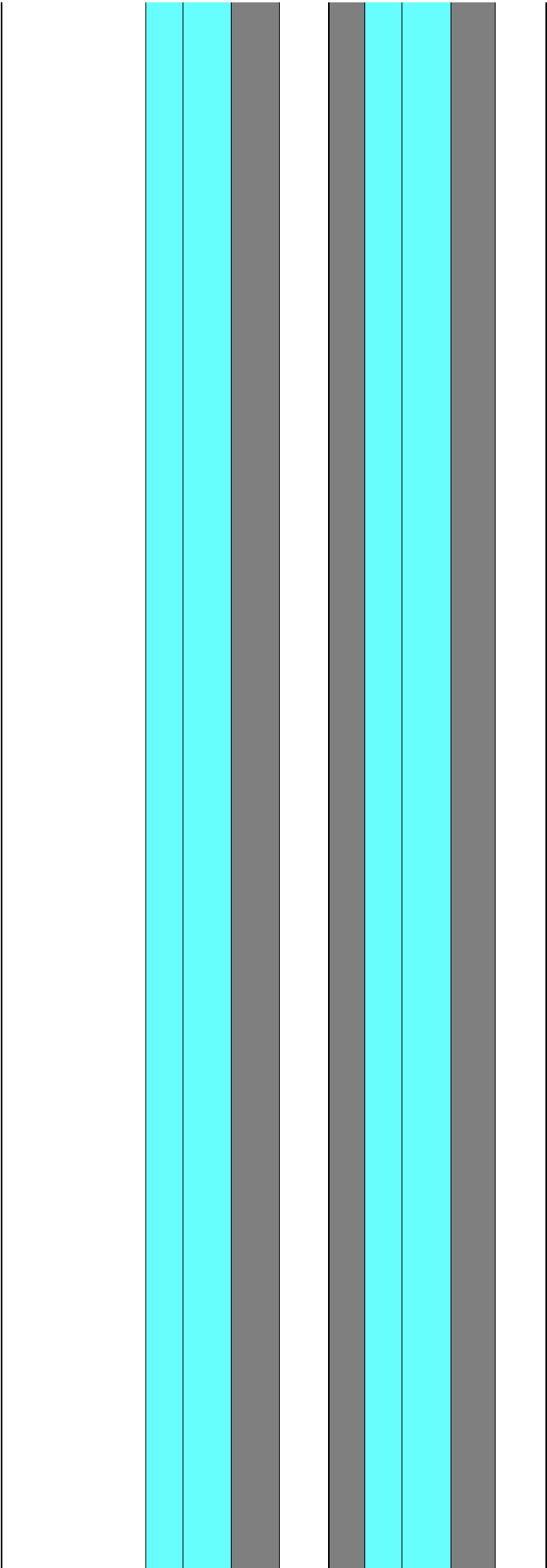
Transportation ECS	0	\$0	\$0			(0)	\$0	\$0	
--------------------	---	-----	-----	--	--	-----	-----	-----	--



Transportation (grades 7 to 9)	0	\$0		\$0	(0)	\$0		\$0
Transportation (grades 10 to 12)	0	\$0		\$0	(0)	\$0		\$0

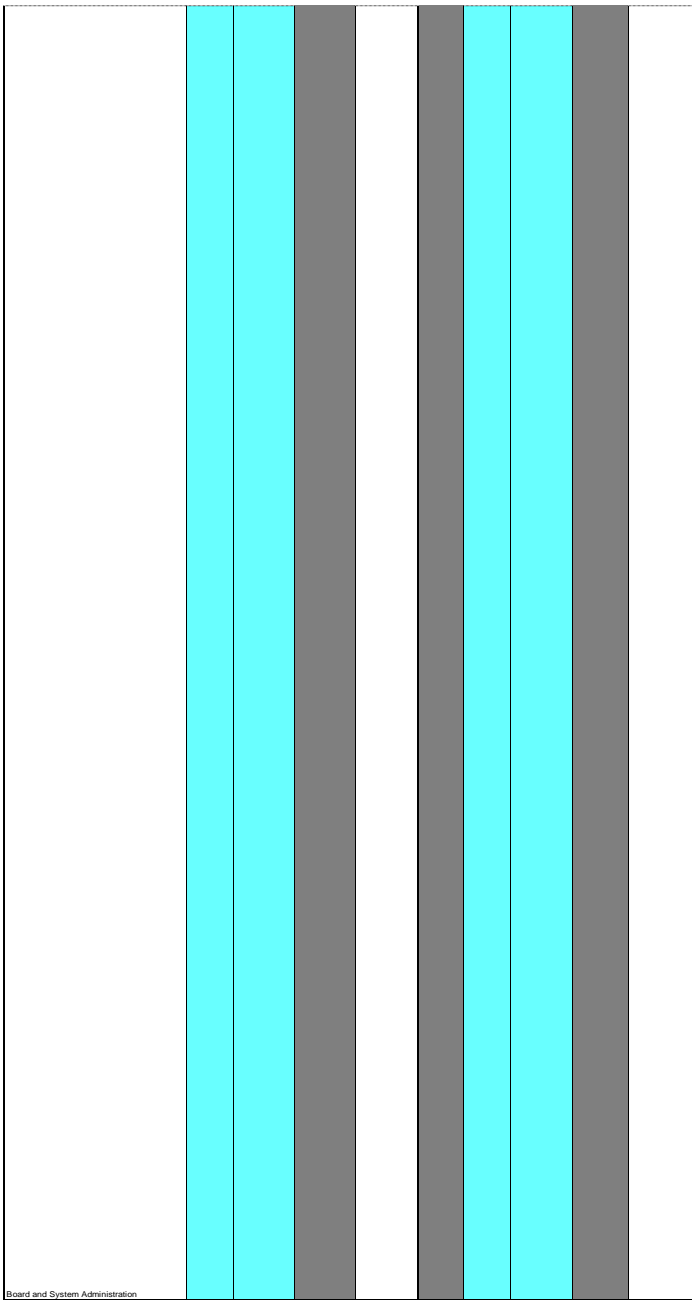
Transportation - Total			\$0	\$0				\$0	\$0





Board and System Administration	(b)	(S)		(S)	(b)	(S)		(S)	(S)
---------------------------------	-----	-----	--	-----	-----	-----	--	-----	-----

(grades 7 to 9)	0	50		50		0	50	50	50



(grades 10 to 12)									
Board and System Administration - Total			\$0	\$0				\$0	\$0
Other Non-Instructional Fees (ECIS and grades 7 to 12) (describe)			\$0	\$25,700				\$0	\$22,660
Non-Instructional - Maximum amount		\$0					\$0		
Non-Instructional Fees - TOTAL			\$0	\$25,700				\$0	\$22,660
Instructional and Non-Instructional Tuition Fees - TOTAL	83		\$1,713	\$38,005		79		\$690	\$33,435
Description/Explanation: Other non-instructional fees include transportation fees.									

[1] Negative amount

[2] Negative amount

[3] Negative amount

[4] Negative amount

[5] Negative amount

[6] Negative amount

[7] Negative amount

[8] Negative amount

[9] Negative amount

[10] Negative amount

[11] Negative amount

[12] Negative amount

[13] Negative amount

[14] Enter
Negative
amount